

Year 5

Year 5 Homework Sheet

Monday 11th May 2026 - Friday 15th May 2026

Reminders

PE kits to be worn on Wednesdays and Fridays.

Reading



Please ensure your child reads at least 3 times a week and that this is recorded in their reading record. **Reading records** must be handed in on **Thursday**.

Spellings



Spelling test will be on **Thursday 21st May**.

We will now be reviewing all the different spelling rules from this year. All the spelling homework sheets are on the school website so look back over the activities and rules we have focussed on this year, ready for a mixed spelling test.

Challenge - Find out the meaning of this BONUS spellings and put them into sentences.

separate

strength

surprise

through

various

women

Times tables

1) $7 \times 2 = \underline{\quad}$

2) $3 \times 8 = \underline{\quad}$

3) $4 \times 6 = \underline{\quad}$

4) $2 \times 9 = \underline{\quad}$

5) $6 \times 4 = \underline{\quad}$

6) $8 \times 4 = \underline{\quad}$

7) $7 \times 5 = \underline{\quad}$

8) $9 \times 10 = \underline{\quad}$

9) $6 \times 6 = \underline{\quad}$

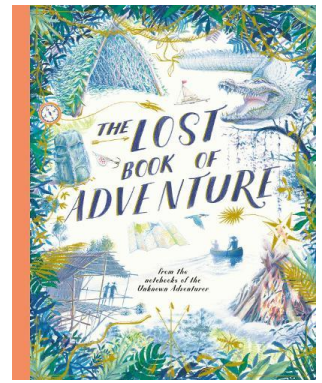
10) $7 \times 3 = \underline{\quad}$



Spelling practice space if needed



English: This week, we have started to look at our new book, *The Lost Book of Adventure* by Teddy Kean. We have created our own deserted island, which we will use to write a survival guide! We have looked at the use of bullet points and informal/formal language.



Challenge: Write a short paragraph explaining the most dangerous part of your deserted island.



Maths: In Maths, we have been focusing on scaling up and down. What are the correct amounts of the ingredients to scale up this recipe?

Chocolate Eclairs
(Makes 4)



Ingredients:

- Butter – 100g
- Flour – 300g
- Double cream - 200ml
- Icing sugar – 80g

Chocolate Eclairs
(Makes 12)



Ingredients:

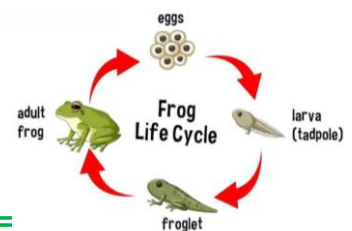
- Butter –
- Flour –
- Double cream –
- Icing sugar –



Foundation Subject

Science: This week, we have been looking at life cycles of different animals and plants.

Challenge: Choose a plant or animal and research and draw its life cycle.



Half Term Project

Create a piece of art (art, painting, drawing, sketching, poetry, photography, sculpture) that shows off your chosen theme. There are 6 themes to choose from. Winning entries will provide a good response to one of the 6 themes, and judges will be asking 'Is it original?' 'Is it well crafted?'

Entries in by Friday 3rd July complete with child's name, class and chosen theme. Each entry needs to have a few sentences/ a short paragraph (no more than 400 words) explaining what inspired the spirited art entry. Parents can help write this.

See separate sheet for more details.

Have a lovely weekend!

Mrs Middleton and Miss Mac ☺